

A man with a mustache, wearing a light blue long-sleeved button-down shirt, blue jeans, and a brown fedora-style hat, stands in a forest. He has his hands on his hips. Behind him is a large pile of cut logs. The forest floor is covered in pine needles and small green plants. The background shows more trees and a dense forest.

# **PROTECT FORESTS, STRENGTHEN COMMUNITIES**

*Discover the  
Forestry Value Chains  
programme in Guatemala*



# DID YOU KNOW?

**Guatemala** means “land of forests”...

Yet its forests are disappearing at an alarming rate.

**In 2024**, Guatemala lost **2.7%\*** of its primary forests... in just one year. What are the main reasons?

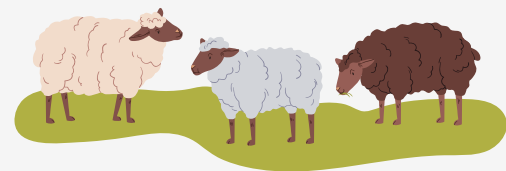
- Drought and fires



- Illegal farming and logging



- Illegal grazing





# THE ROLE OF FOREST OWNERS

In rural areas, forest owners or tenants can play a key role in preserving biodiversity while contributing to local economic development...

...provided **they have the necessary skills, access to finance and the rights to manage forests sustainably.**





# WHAT DOES ADA DO?

ADA supports small-scale forest owners or tenants in four ways:

## TRAINING

in sustainable forest management

## CONNECTING

forest owners and local MSEs\* to create inclusive value chains

## FINANCING

by contributing to the design of financial products tailored to their needs

## ADVOCATING

for the removal of legal barriers and sustainable forest management



\*Micro and small enterprises





# WHAT IS SUSTAINABLE FOREST MANAGEMENT?

## Preserving ecosystems

Protecting **biodiversity, soil and water** to maintain forest health and resilience.

## Supporting local communities

Promoting **equitable economic and social benefits** for people who live in and protect forests.

## Ensuring responsible use

Using forest resources (wood, fruit, services) **without compromising their regeneration.**



# KEY ELEMENTS OF THE PROGRAMME



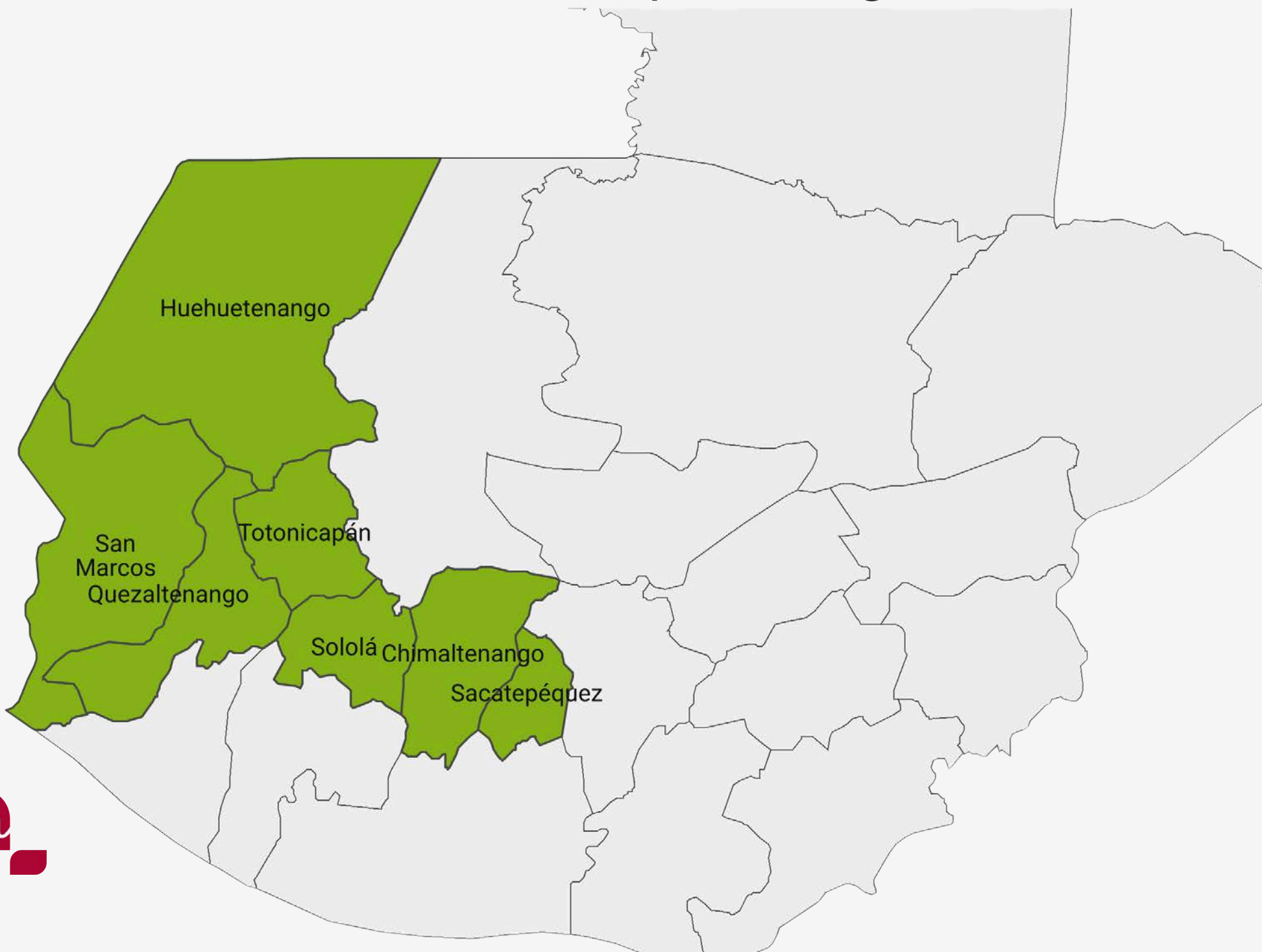
**Areas of operation:** Central and western regions of Guatemala



**Local partners:** Tikonel and ASOCUCH



**Beneficiaries:** Small forest owners and tenants as well as wood processing MSEs



# OUR LOCAL PARTNERS



**Tikonel** is an organisation committed to the economic and social development of rural communities, particularly indigenous and farming populations.



Asociación de Organizaciones

**The Association of Cuchumatanes Organisations (ASOCUCH)** is a network of small producer organisations, which it supports and advises in their organisational, productive and economic processes, with a view to capacity building.

# VALUE CHAIN APPROACH

To improve the living conditions of forest owners and tenants in a sustainable manner, ADA and Tikonel seek to **structure local value chains**.



ADA promotes cooperation between stakeholders in the sector by **supporting the organisation of business meetings**.

ADA strengthens the **management skills** of wood processing MSEs **to improve their competitiveness and market access**.





# PRODUCE LEGALLY, PROTECT SUSTAINABLY

ADA and ASOCUCH support *Abies guatemalensis* farmers to sustainably manage their plantations in order to provide legally sourced Christmas trees and decorations.

## This approach:

- **Generates** sustainable income for families
- **Reduces** pressure on old-growth forests
- **Protects** the unique species *Abies guatemalensis*.





# INITIAL RESULTS

Since the programme began in 2024:



## 255

farmers have been trained in sustainable forest management practices



## 100

hectares of sustainably managed forests



## 22

MSEs supported in strengthening their internal management.



# EXPECTED IMPACT

ADA's programme aims to transform forest management into a sustainable livelihood.

- **Increased income** for producers and MSEs
- **Local, inclusive and sustainable** value chains
- **Improved protection of forests** against fires, disease and illegal logging.
- **Forest biodiversity** preservation
- **Improved living conditions** for rural communities

